



HAWKS NEWS

Week at a Glance



Mon. Mar. 30

- **School back in session**
- **March/April assembly**

Tues. Mar. 31

- **Terrific Tuesday!**

Wed. Apr. 1

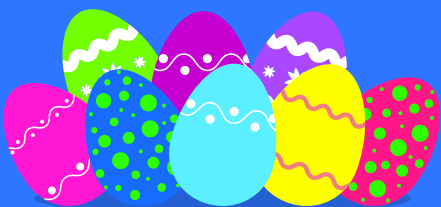
- **ECE Egg Drop! See attached letter and form**

Thurs. Apr. 2

- **Thankful Thursday!**

Fri. Apr. 3

- **Good Friday - no school**



PRINCIPAL'S MESSAGE

Dear East Chilliwack Families,



Spring Break has begun!

We wish you a happy first day of spring on March 20th! If you are looking for activities to do as a family over the break, here are some free, fun, and local ideas:

1. Take a walk along the Hope Slough, Cheam Wetlands, Vedder River, or Rotary Trail and play at the playgrounds.
2. Hike Mount Thom, Qoqó:lem Trail, the stairs on Little Mountain, or visit the Chilliwack Community Forest.
3. Observing and enjoying nature at the Great Blue Heron Reserve (look for the heron nests!)
4. Go for a bike ride along the Vedder Rotary trail.
5. Visit the Chilliwack library

See you back at ECE on Monday, March 30th!

Kindergarten Registration is open! If you have a child or know someone who has a child starting Kindergarten in September 2026, please register [here](#).





Upcoming Dates

Apr. 6 - Easter Monday - no school

Apr. 7 - Gr. 5 info session by RTCS at ECE; boys' basketball game

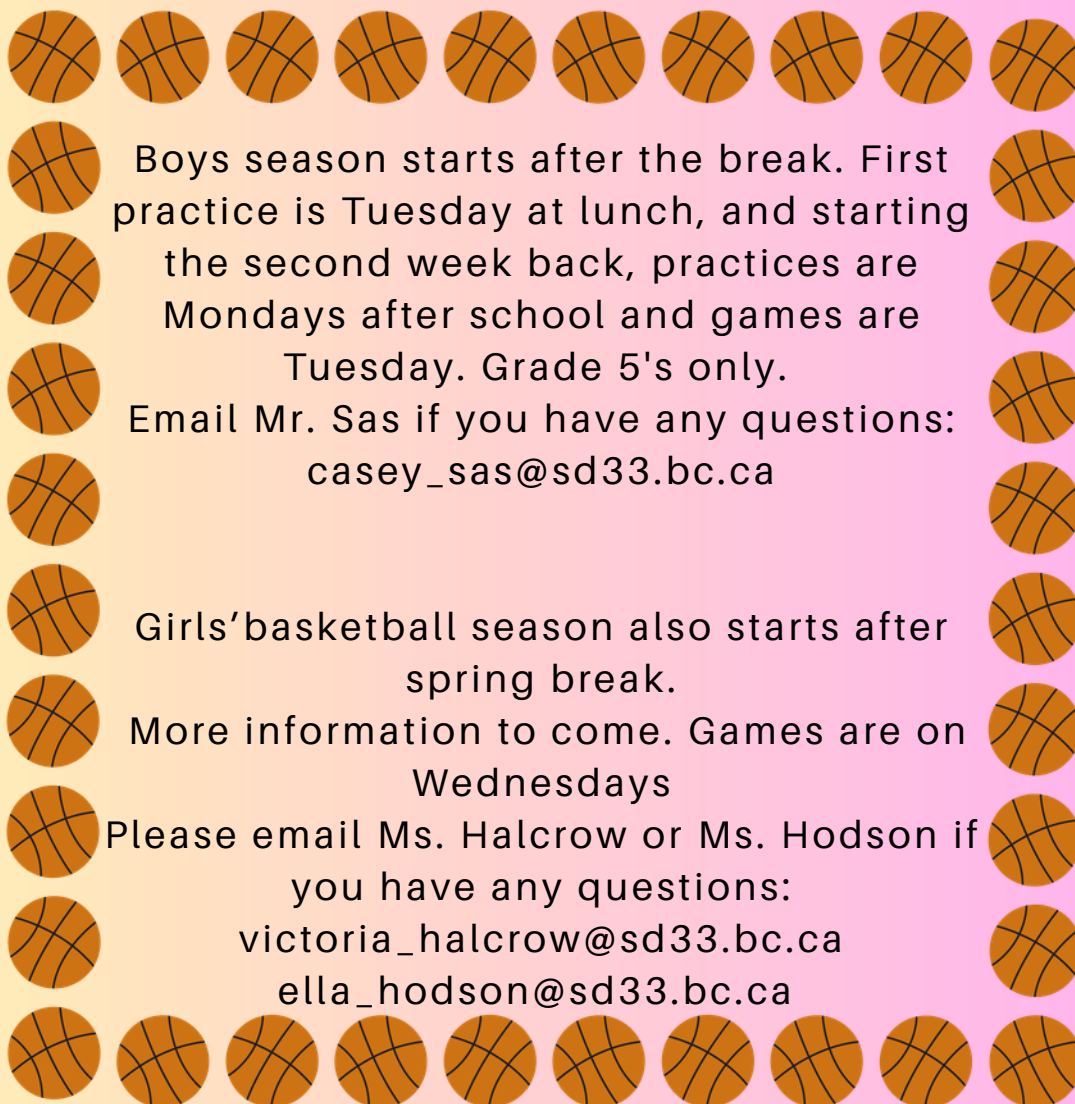
Apr. 8 - Girls' basketball game

Apr. 10 - Dress as Your Favourite Book Character Day/lockdown drill

Apr. 13-17 - Scholastic Book Fair

Apr. 24 - Pro-D Day - no school for students

Check out the calendar on our ECE website! <https://eastchilliwack.sd33.bc.ca/>



Boys season starts after the break. First practice is Tuesday at lunch, and starting the second week back, practices are Mondays after school and games are Tuesday. Grade 5's only.
Email Mr. Sas if you have any questions:
casey_sas@sd33.bc.ca

Girls' basketball season also starts after spring break.
More information to come. Games are on Wednesdays
Please email Ms. Halcrow or Ms. Hodson if you have any questions:
victoria_halcrow@sd33.bc.ca
ella_hodson@sd33.bc.ca